

Overlap Control Valve Sleeve Kits

68942-05K Overlap Control Sleeve Kit

3 Sleeves (1 for each location)
3 O-Rings

Also available separately

68942-02 1-2/4-5 Overlap Control Sleeve

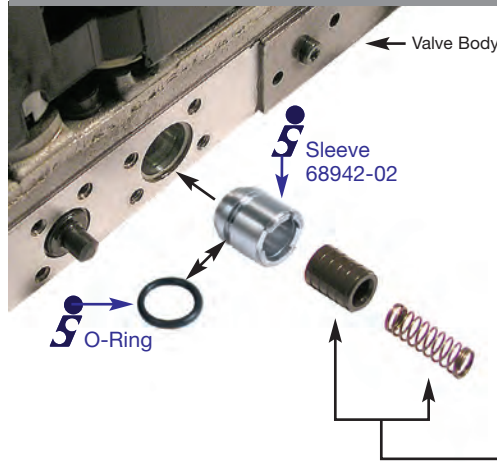
68942-03 2-3 Overlap Control Sleeve

68942-04 3-4 Overlap Control Sleeve

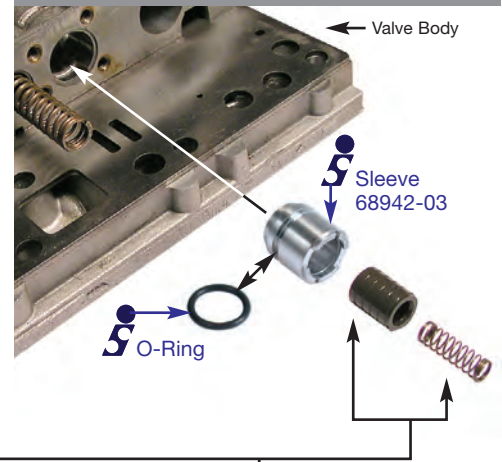
Each kit includes the following

1 Sleeve
1 O-Ring

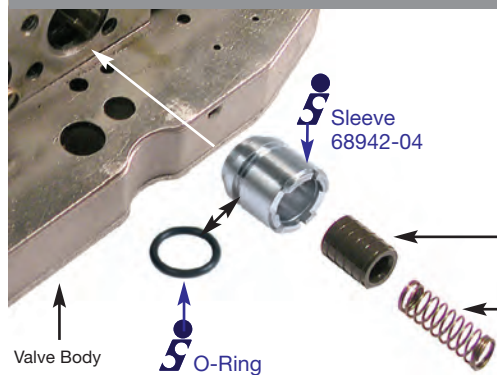
1-2/4-5 Overlap Control Sleeve



2-3 Overlap Control Sleeve



3-4 Overlap Control Sleeve



OEM springs and
anodized valves



INSPECTION

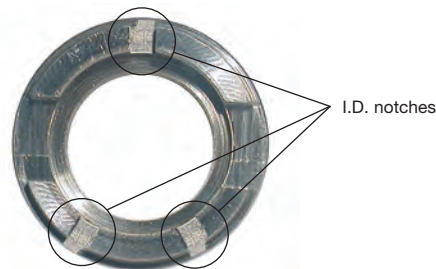
Inspect the inside diameter of the overlap control valve sleeves for signs of wear. Shiny patches indicate excessive wear.

NOTE: Ensure that the OEM springs are returned to their appropriate locations. Location, spring free length, and the spring load at full stroking height of the inner valve are as follows:

1-2 Overlap Spring: .817" free length; 1.5 lbs – **Sleeve:** 1 I.D. notch

2-3 Overlap Spring: .654" free length; 11.4 oz – **Sleeve:** 2 I.D. notches

3-4 Overlap Spring: .790" free length; 1.2 lbs – **Sleeve:** 3 I.D. notches



INSTALLATION

1. Remove the OEM sleeve, plunger valve and spring.
2. Discard the worn sleeve. Retain the plunger valve and spring.
3. Install the o-ring into the sleeve groove and roll on the bench to resize the O.D. Lubricate the o-ring and sleeve.
4. Reinstall the spring into the plunger valve pocket. Slide the correct sized plunger valve into the sleeve, with the spring facing the grooved end face. The end-face grooves on the sleeve aid in easy identification.
5. Slowly install the sleeve assembly into the valve body bore, taking care not to shear the o-ring. Ensure the end face grooves are outward.